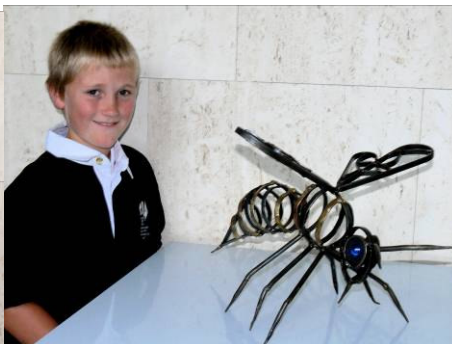




**Attention: Industrial Arts, Visual Arts, Careers Advisors,  
Principals & All High School Students of 2009/2010**



**7<sup>th</sup> annual  
SCULPTOR OF THE YEAR AWARDS  
2009/2010  
SHEETMETAL INDUSTRY ASSOCIATION**

**Fantastic Prizes • Hands on Project • Certificates of Participation  
• Industry Initiated Program • Unique Opportunity to Excel**

**“Art of Sheetmetal” Exhibition  
MLC Centre, Sydney, Monday 17<sup>th</sup> May – Friday 21<sup>st</sup> May 2010**

**Gala Dinner Awards Ceremony, Friday 21<sup>st</sup> May 2010**

**Sculpture Launch, Friday 21<sup>st</sup> May 2010, MLC Centre Sydney  
to be opened by the Hon. Graham West, MP**

**Entries close: Friday 23<sup>rd</sup> April 2010 [events@sheetmetalaustralia.com.au](mailto:events@sheetmetalaustralia.com.au)**

[www.sheetmetalaustralia.com.au](http://www.sheetmetalaustralia.com.au)

Enquiries: [events@sheetmetalaustralia.com.au](mailto:events@sheetmetalaustralia.com.au) Phone Kylie: 0400 272 848



## **SHEETMETAL INDUSTRY ASSOCIATION'S SCULPTOR OF THE YEAR AWARDS 2009/2010**

### Criteria:

- Open to all NSW high school students of 2009/ 2010 aged 13 – 19 years
- Must be that of a student's individual work
- Predominately metal construction (sheetmetal/ metal/ wire/ recycled metal etc.)
- Preferably less than 1.5m high
- Free standing or displayable on plinth (supplied by SIA)
- Moveable by two people
- Able to withstand occasional touching and not fall over or break
- Costs associated with transportation of sculptures to be met by the nominee/school
- Dangerous designs to be encased or enclosed with safety aspects considered
- Must be publicly acceptable and in good taste

### Entry information:

- Multiple entries are permitted from the same school/class
- Email photo/s of the sculpture with the completed nomination form **by Friday 23<sup>rd</sup> April 2010** to [events@sheetmetalaustralia.com.au](mailto:events@sheetmetalaustralia.com.au)

### Judging Process:

#### Round 1:

The photos submitted by nominees are judged by a panel of judges consisting mainly of industry personnel. All details regarding the sculptor (such as name, school, age etc) remain completely anonymous during this process. Approximately 10 sculptures are selected as finalists and are invited to be displayed in the "Art of Sheetmetal" exhibition. Finalists will also be invited to attend the Sculpture Launch and Gala Dinner. Non-finalists will receive Certificates of Participation.

#### Round 2:

The final round of judging takes place on the last day of the exhibition. This is performed by a panel of judges including prominent industry members and established artists.

### Sculpture Launch:

To be held at the MLC Centre and opened by the Hon. Graham West MP, the Sculpture Launch offers finalists the rewarding opportunity to receive their just recognition through finalist presentations and inspiring speeches. Finalists will also have the opportunity to view their works on exhibition and speak with the judges.

### Gala Dinner Awards Ceremony:

Attended by approximately 250 guests, this is a night of industry celebration where the ultimate winners of both SIA's awards (The Apprentice of the Year and The Sculptor of the Year Awards) are announced. Sculptors (or their schools) also have the opportunity to auction off their works. Finalists will receive complimentary tickets to the dinner with extra tickets available to be purchased.

**Entries close: Friday 23<sup>rd</sup> April 2010** [events@sheetmetalaustralia.com.au](mailto:events@sheetmetalaustralia.com.au)



**Sheetmetal Industry Association  
Sculptor of the Year Awards 2009/2010  
2010 Nomination Form**

Please complete this form and send with photo/s of the sculpture  
**by Friday 23<sup>rd</sup> April 2010**  
by email to [events@sheetmetalastralia.com.au](mailto:events@sheetmetalastralia.com.au) or fax (02) 8004 7028

<b>Student's contact and sculpture details:</b>					
<b>Student's name:</b>					
<b>Student's email address:</b>					
<b>Student's postal address:</b>				<b>Postcode:</b>	
<b>Student's Phone Number:</b>			<b>Mobile:</b>		
<b>Sculpture Title:</b>					
<b>Sculpture Dimensions:</b>		Height:	mm	<b>School Year sculpture completed:</b>	
		Width:	mm		
		Length:	mm		
<b>Plinth:</b>		<input type="checkbox"/> Not required as sculpture is freestanding <input type="checkbox"/> Required (will be provided by SIA)			
<b>Finalist Auction:</b>	<input type="checkbox"/> Yes <input type="checkbox"/> No	<b>Auction Proceeds:</b>	<input type="checkbox"/> School <input type="checkbox"/> Student	<b>Reserve:</b>	\$
<b>Student's teacher and school contact details:</b>					
<b>High School:</b>					
<b>School Address:</b>					
				<b>Postcode:</b>	
<b>Teacher's name:</b>					
<b>Department:</b>			<b>Mobile:</b>		
<b>Phone:</b>			<b>Fax:</b>		
<b>Email:</b>					
<b>Principal's name:</b>					

The details supplied on this form will not be utilised for any other purpose than in reference to the provision and exchange of information between the entrant, their school and the SIA solely in regards to the SIA Sculpture Awards.

**All entries will receive confirmation of receipt of entry.** Please note new email entry address [events@sheetmetalastralia.com.au](mailto:events@sheetmetalastralia.com.au)

[www.sheetmetalastralia.com.au](http://www.sheetmetalastralia.com.au)

Enquiries: [events@sheetmetalastralia.com.au](mailto:events@sheetmetalastralia.com.au) , Phone Kylie: 0400 272 848, Fax: 61 2 8004 7028